

INNOHOME STOVE ALARM

SGS1030

REFERENCE AND
INSTALLATION
MANUAL

770-00090-A1

For indoor use only.
Do not use in a
professional kitchen.

inno home

Thank you for choosing Innohome Stove Alarm!

Innohome Stove Alarm is a safety product for domestic kitchens. The Stove Alarm is a state-of-the-art heat sensor that monitors the stove (or the range) from the top. Ensure to read this manual prior to starting installation.



Safety rules

Stove Alarm helps to prevent potentially dangerous situations, and it makes the use of the stove safer.

Never leave the stove unattended. Always check compliance with local regulations.

- For indoor use only.
- Do not use in a professional kitchen.
- Do not hold the Stove Alarm close to the ear. It can cause hearing damage when in alarm or test mode.
- Do not leave children alone with the product or any of its parts or packaging. There is a risk of choking.
- Do not disassemble the product.
- Do not immerse the Stove Alarm in water.
- The Stove Alarm will not emit an alarm if the temperature of the stove is too low to identify a dangerous situation, or if the stove has an automatic limitation of temperature increase.
- Do not short-circuit, charge, open or heat the battery. There is a risk of explosion.

CONTENTS

TECHNICAL SPECIFICATIONS	3
INSTALLATION	4-7
GETTING STARTED	8
ACTION IN AN EVENT OF AN ALARM	8
FREQUENTLY ASKED QUESTIONS	9
SETTINGS	10
FUNCTION TEST	11
NOTICES	12

TECHNICAL SPECIFICATIONS

SGS1030 Stove Alarm

- Nature of supply: Battery operated (CR2302 Button Cell, 3V DC)
- Sensor Dislocation Alarm
- Adjustable sensitivity levels (learning)
- Audible alarm signal min. 65 dB(A), max. 80 dB(A) @ 40" (100cm)
- Sensing distance (from the range top) 18"-32" (45-80cm) OTR/range hood installation
- Flame retardant and high heat resistant plastics, UL recognition 94 V-0
- Wireless 315 MHz/10mW RF

- Operating ambient temperature: 32 °F to 95 °F (0 °C to 35 °C)
- Intended transportation condition of control: 14 °F to 131 °F (-10 °C to 55 °C)

Applied standards

FCC Rule Part: 15.231:2017 (Periodic operation in the band 40.66-40.70 MHz and above 70 MHz)

IC Rule Part: RSS-210 Issue 9, 2017 and RSS-GEN Issue 5, 2018

U.S. Pat. Nos 10,051,993 and 10,347,112

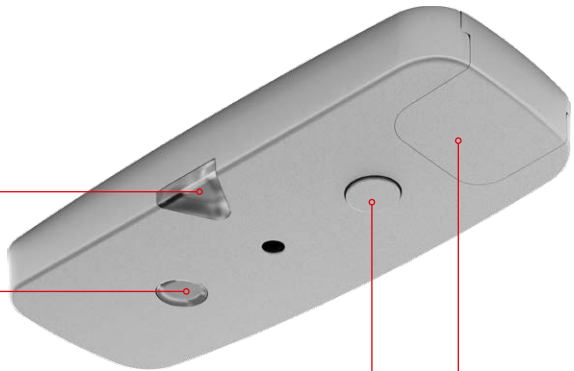
Signal LED

should face towards user

IR lens

(Lens extension for high installations)

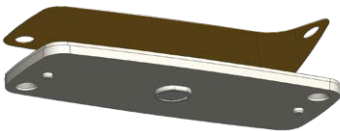
Button



Battery lid

The Stove Alarm is a battery-operated device. Use only new CR2302 button cell (watch type) batteries. To avoid damage or malfunction, do not use other types.

Pull out the battery lid. Place the battery under the lid, and slide the lid back in. Make sure that "the plus side" comes upwards (towards the battery lid). The Stove Alarm makes a "beep" when the battery is inserted correctly. Replace the leaking battery immediately.



Installation plate with adhesive tape



Stove Alarm

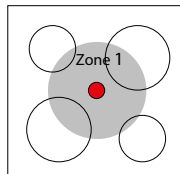
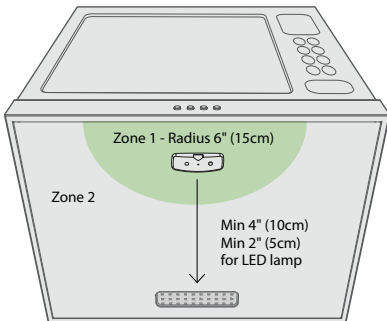
OVER-THE-RANGE MICROWAVE



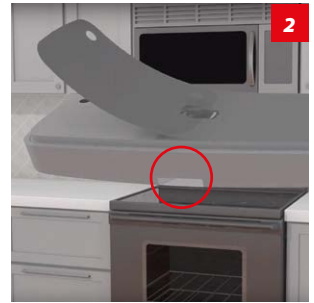
Select the mounting location

Measure the installation height. The Stove Alarm should be centered above the stove, preferably within Zone 1 (see the diagram below). It can be attached to the grease filter. It is important to ensure the minimum distance from the light underneath the hood is 4" (10cm) (2" (5cm) is enough for LED lamp).

Zone 1 is recommended for best performance.



Zone 1 is immediately above the middle of the burners. Max 6" (15cm) from the centre.



Mount the Stove Alarm

The Stove Alarm might beep at this stage indicating that it is not properly placed on the installation plate. As this happens, no further action is required.

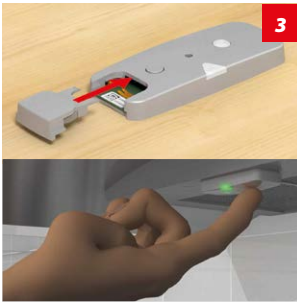
If there is a metal mesh grease filter on the range hood, make sure it is greaseless and dry. Press at least for a minute from the opposite side while attaching the adhesive.

Carefully remove the protective film from the installation plate. Attach the Stove Alarm with the LED facing the user.

Attach the installation plate while the Stove Alarm is on it.

INSTALLATION UNDER MICROWAVE

Allow the Stove Alarm to reach room temperature before use.
See the table below for the mounting location and follow instructions 1–4.



Starting the Stove Alarm

Insert the battery (see page 3) and place the Stove Alarm on the installation plate. Press the button shortly. (LED flashes green).



Watch the movie:
<https://vimeo.com/321502592>
Sensor installation

Check installation height

If the distance from stove to Stove Alarm is more than 24" (60cm), the Stove Alarm's sensitivity level must be adjusted manually. Please refer to the table underneath together with the information on page 18, alternatively watch the film on sensitivity configuration.



Watch the movie:
<https://vimeo.com/321503955>
Setting sensitivity

DISTANCE FROM COOKER TO HEAT SENSOR	COOKER SIZE				SENSITIVITY LEVEL CONFIGURATION	
	0"–24" (0–60cm)		25"–36" (61–90cm)		Sensitivity	Acknowledgement "beep(s)"
	Zone 1	Zone 2	Zone 1	Zone 2		
31"–32" (76–80cm)	OK	OK	OK	OK	4 presses	●●●●
29"–30" (71–75cm)	OK	OK	OK		5 presses	●●●●●
27"–28" (65–70cm)	OK	OK	OK		6 presses	●●●●●●
25"–26" (61–64cm)	OK	OK	OK		7 presses	●●●●●●●
24" (60cm) Factory setting	OK	OK	OK		8 presses	●●●●●●●●
22"–23" (55–59cm)	OK	OK			8 presses	●●●●●●●●
18"–21" (45–54cm)	OK				8 presses	●●●●●●●●

OK = The installation complies with the European standard for stove guards

Please note: The sensitivity level of the Heat Sensor is confirmed by the appropriate sound pattern sequence only and not the LED flashes.

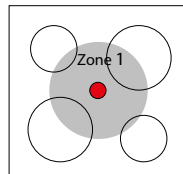
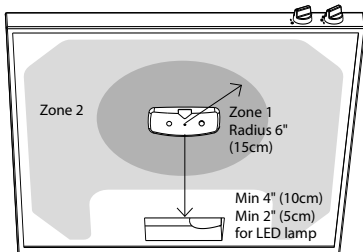
RANGE HOOD



Select the mounting location

Measure the installation height. The Stove Alarm should be centered above the stove, preferably within Zone 1 (see the diagram below). It can be attached to the grease filter. It is important to ensure the minimum distance from the light underneath the hood is 4" (10cm) (2" (5cm) is enough for LED lamp).

Zone 1 is recommended for best performance.



Zone 1 is immediately above the middle of the cooker plates. Max 6" (15cm) from the centre.

Mount the Stove Alarm

The Stove Alarm might beep at this stage indicating that it is not properly placed on the installation plate. As this happens, no further action is required.

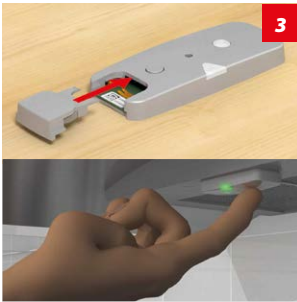
If there is a metal mesh grease filter on the range hood, make sure it is greaseless and dry. Press at least for a minute from the opposite side while attaching the adhesive.

Carefully remove the protective film from the installation plate. Attach the Stove Alarm with the LED facing the user.

Attach the installation plate while the Stove Alarm is on it.

INSTALLATION UNDER RANGE HOOD

Allow the Stove Alarm to reach room temperature before use.
See the table below for the mounting location and follow instructions 1–4.



Starting the Stove Alarm

Insert the battery (see page 3) and place the Stove Alarm on the installation plate. Press the button shortly. (LED flashes green).



Watch the movie:
<https://vimeo.com/321502592>
Sensor installation

Check installation height

If the distance from stove to Stove Alarm is more than 24" (60cm), the Stove Alarm's sensitivity level must be adjusted manually. Please refer to the table underneath together with the information on page 18, alternatively watch the film on sensitivity configuration.



Watch the movie:
<https://vimeo.com/321503955>
Setting sensitivity

DISTANCE FROM COOKER TO HEAT SENSOR	COOKER SIZE				SENSITIVITY LEVEL CONFIGURATION	
	0"–24" (0–60cm)		25"–36" (61–90cm)		Sensitivity	Acknowledgement "beep(s)"
	Zone 1	Zone 2	Zone 1	Zone 2		
31"–32" (76–80cm)	OK	OK	OK	OK	4 presses	••••
29"–30" (71–75cm)	OK	OK	OK		5 presses	•••••
27"–28" (65–70cm)	OK	OK	OK		6 presses	••••••
25"–26" (61–64cm)	OK	OK	OK		7 presses	•••••••
24" (60cm) Factory setting	OK	OK	OK		8 presses	••••••••
22"–23" (55–59cm)	OK	OK			8 presses	••••••••
18"–21" (45–54cm)	OK				8 presses	••••••••

OK = The installation complies with the European standard for stove guards

Please note: The sensitivity level of the Heat Sensor is confirmed by the appropriate sound pattern sequence only and not the LED flashes.

GETTING STARTED



The Stove Alarm may start making short “beeps” every five seconds while it is being used (“pre-alarm”).





Press the button to indicate that it is not a dangerous situation.



The Stove Alarm has then learned more about your cooking habits and you can continue cooking.

ACTION IN THE EVENT OF AN ALARM

STOVE ALARM SOUND	MEANING	MEASURES
Short “beeps” with 5-second intervals. 	Pre-alarm The Stove Alarm sounds an alert to danger.	If the alarm was triggered during normal cooking: press the button once while the pre-alarm sounds. The alarm is turned off and the sensitivity adjusts slightly.
Many quick “beeps” followed by a long, very loud sound. 	Alarm The Stove Alarm sounds loud alert indicating dangerous cooking temperature.	Turn the power off. The indication for the dangerous situation stops when the temperature is back at a safe level. Until then, the red LED flashes every 5 seconds.

FREQUENTLY ASKED QUESTIONS

1. The Stove Alarm emits alarms during normal cooking.

ANSWER 1: Pressing the Stove Alarm button during the pre-alarm lowers the sensitivity slightly.

Other causes of alarms during normal cooking:

- A pot is removed from a hot burner
- A kettle/pot does not cover the burner
- Cooking without a lid
- A hot frying pan placed on the burner

ANSWER 2: If measures to prevent unnecessary alarms have been performed a few times and the Stove Alarm still emits alarms in the same situation, the sensitivity should be adjusted less sensitive manually, for example from level 4 to level 5. See page 18.

2. During the function test, the Stove Alarm does not emit a sound when the button is pressed.

ANSWER: Make sure that the battery has power and is inserted properly, "plus-side" up.

3. The Stove Alarm did not give an alarm in a dangerous situation.

ANSWER 1: It is possible that the temperature was not high enough to be identified as a dangerous situation. The Stove Alarm takes different cooking situations into account, including high-temperature cooking, and should not give an alarm too easily. Therefore, it only emits an alarm when a certain temperature (or rate of temperature rise) is detected, but still long before a real risk situation. However, it is important to check the Stove Alarm's function (see the next sections).

ANSWER 2: Make sure that the Stove Alarm is correctly installed. See page 5 and after.

ANSWER 3: It is possible to change the sensitivity of the Stove Alarm, so it reacts earlier. Increase the sensitivity by one or two steps. See page 18.

4. I cancelled the pre-alarm by mistake, even though the alarm was triggered by a dangerous situation. Has the Stove Alarm become too insensitive now?

ANSWER: Deactivating the pre-alarm changes the sensitivity, but only to a small extent. This pre-alarm can therefore be deactivated several times without affecting the sensitivity of the high temperature alarm.

5. The Stove Alarm gives an alarm when I make coffee with an espresso pot.

Espresso pots are often much smaller than the burner, and the heat from the burner makes the Stove Alarm think there is a dangerous situation. Use suitable size cooking vessels.

ANSWER: Deactivate the alarm by pressing the Stove Alarm button. The sensitivity level of the Stove Alarm will not change, as the espresso maker triggered an alarm for maximum temperature and not self-learning.

6. What do I do if the Stove Alarm must be replaced with a new one?

ANSWER: Contact the retailer for a new part.

7. Where can I find the Stove Alarm model number?

ANSWER: On the underside of the Stove Alarm there is a sticker with the model number.

SETTINGS

Change the sensitivity level

Due to differences in kitchen environments, the sensitivity level of the Stove Alarm may have to be set manually.

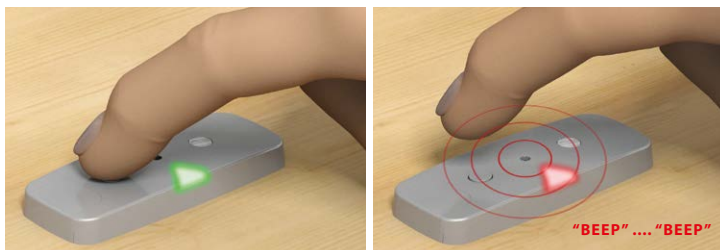
1. Remove the Stove Alarm from the installation plate

It makes 4 "beeps" (●●●●).

2. Adjust the sensitivity level

See pages 4–7 for sensitivity levels to be applied.

Place the Stove Alarm on the table (as shown in the picture). Press and hold in the button until 2 "beeps" (●●) are heard. Release the hold. The correct sensitivity can now be applied.



Note: When selecting the correct sensitivity level it is important the process is not rushed. Ensure the sensor button is pressed firmly down each time, holding for a period of 1 second before releasing.

Ensure to pause for 1 second between each press.

3. Confirmation of setting

After 5–15 seconds, the Stove Alarm will confirm the sensitivity setting with the same number of "beeps". In case of error, start from step 2 again. Please note that the sensitivity level is confirmed by the appropriate number of "beeps" only and not the LED flashes.

4. Activate the Stove Alarm

Return the Stove Alarm correctly onto the installation plate. Press the button once.



Watch the movie:
<https://vimeo.com/321503955>
Setting sensitivity

Checking the sensitivity level

1. Remove the Stove Alarm from the installation plate. It gives 4 "beeps" (●●●●).

2. Press and hold the button (approx. 10 sec.) until 2 "beeps" (●●) are heard.



3. The default sensitivity setting is level 8, and when checking the level, the Stove Alarm gives a set of "beeps" as follows: 8 - 8 - 5 - 8. If the sensitivity was adjusted to level 4, the sensor would give "beeps": 4 - 4 - 5 - 4.



Watch the film:
<https://vimeo.com/321504101>
Checking sensitivity

Reset the Stove Alarm to factory settings

Remove the Stove Alarm from the installation plate. It gives 4 "beeps" (●●●●).

1. Remove the battery lid.

2. Press the button once.

3. Return the battery lid. The Stove Alarm shall make a "beep".

4. Press and hold the button until the three "beeps" are heard. Release.

If three "beeps" cannot be heard, something went wrong. Repeat from Step 1. Return the Stove Alarm to its installation plate and press the button once.



Watch the film:
<https://vimeo.com/321504446>
Factory settings



FUNCTION TEST

The installation is completed when the test has been passed.

The Stove Alarm will then give an alarm. This user manual, accessories and stickers should be left with the product for future reference.



Test the Stove Alarm

Press the button shortly. The LED indicator flashes green and the Stove Alarm is now operational.

From now on, the Stove Alarm alerts the user about potentially risky situations during cooking.

Warranty

This product has a 2 year manufacturer's warranty that covers defects in material or workmanship, starting from the date of purchase. This warranty does not affect your legal rights. The warranty covers use of the product in normal conditions in private households and shared housing. The warranty is limited to the replacement or repair of faulty components. The warranty applies only when the product is used according to instructions. It does not cover damage arising from misuse, improper handling, while in transit, application of force, dust, dirt, water or other environmental factors, defects due to causes beyond control such as lightning, abnormal voltage, acts of God, or from batteries. In case of a warranty claim, please contact the vendor for instructions. Only authorised returns with a full description of the fault are accepted. After the warranty period, repairs may be charged and are not always possible. Warranty claims do not extend the original warranty period and the warranty of the replacement parts expires with the warranty of the product. Unless there is a statutory obligation, the manufacturer is not responsible for further claims, including personal or material damages, arising from the use of the product or from non-functioning or mis-functioning of the product.

Disposal

Proper disposal of this product helps to save valuable resources and prevent potentially harmful effects on the environment, which may otherwise occur in the event of improper handling of waste. Dispose any used batteries at a hazardous waste collection site or recycling facility. Batteries contain toxic materials and therefore should never be placed in the trash. You may be able to recycle or dispose button batteries at some electronics retailers – Please consult your local recycling and hazardous waste guidelines. The battery needs to be removed before the Stove Alarm can be recycled.

Regulatory notice for FCC and ISED/ISDE

US: This device complies with Part 15, Subpart C of the FCC Rules. Operation is subject to the following two conditions: (1) This device may not cause harmful interference, and (2) this device must accept any interference received, including interference that may cause undesired operation. The user that changes or modifications not expressly approved by the party responsible for compliance could void the user's authority to operate the equipment. To comply with FCC RF exposure compliance requirements, a separation distance of at least 8" (20cm) must be maintained between the antenna of this device and all persons.

CAN: This product complies with Innovation, Science and Economic Development Canada (ISED) license-exempt RSS standard(s). Operation is subject to the following two conditions: (1) product may not cause harmful interference, and (2) product must accept any interference received, including interference that may cause undesired operation. To comply with RSS-102 RF exposure compliance requirements, a separation distance of at least 8" (20cm) must be maintained between the antenna of this device and all persons. This digital apparatus does not exceed the Class B limits for radio-noise emissions from digital apparatus as set out in the Radio Interference Regulations of the Canadian Department of Communications.

CAN: Ce dispositif est conforme à la norme CNR d'Industrie Canada applicable aux appareils radio exempts de licence. Son fonctionnement est sujet aux deux conditions suivantes: (1) le dispositif ne doit pas produire de brouillage préjudiciable, et (2) ce dispositif doit accepter tout brouillage reçu, y compris un brouillage susceptible de provoquer un fonctionnement indésirable. Ce produit a été testé et s'est avéré conforme aux limites d'exposition aux rayonnements établies par la FCC et ISDE pour un environnement non contrôlé. Il respecte également les lignes directrices de la FCC en matière d'exposition aux radiofréquences ainsi que la norme CNR-102 des règles d'ISDE relatives à l'exposition aux radiofréquences. Maintenir au moins 20cm à distance pour la condition physique-garde. Cet appareil numérique ne dépasse pas les limites de la classe B pour les émissions radio bruit des appareils numériques, tel qu'énoncé dans le Règlement sur le brouillage radioélectrique du ministère des Communications du Canada.

INNOHOME OY

Itsehallintokuja 4
Polaris Business Park,
Castor House
FI-02600 Espoo, Finland
www.innohome.com

